



The port sector is extremely important for the development and growth of a country, since maritime transport is the dominant mode for international movement of cargo and, therefore, crucial for international trade. Thus, the competitiveness between ports, terminals and berths has intensified, especially with the increased participation of the private sector in port operations (Beuren et al., 2018).

Due to the relevance of the port sector and the changes that have taken place in the supply chain, the search for greater efficiency is constant (Brooks and Pallis, 2008), being vital for increasing competitiveness. Furthermore, ports are capital-intensive structures that require large amounts of investment (Gumede and Chasomeris, 2018). In this respect, a cost management system is considered as a key tool for effective port management (Andriotti and Kliemann Neto, 2019), as it provides quick and accurate information about port costs and helps in the creation of performance indicators. It is in this context that **My Ports** emerges, with software capable of providing a complete port cost and profitability solution, customized for each client.

In order to remain competitive and ensure economic and financial sustainability, ports have been facing important business challenges, such as operational and cargo profile changes; need for investment evaluation; correct pricing of services; increased competitiveness; demand for higher levels of efficiency; need for more effective management and greater regulatory control, among others. Thus, the need for accurate operational databases, as well as reliable and traceable management information, increases. **MyABCM Ports** is a complete and customized technology solution that offers support, training and technical consulting, in addition to having implementation accelerators that stand out for the sector-specific activity dictionary, with all the processes and re-

ports that are essential for a granular analysis of the business's costs and profitability.

What is it for?

My Ports is a cost and profitability management solution aimed at the port sector that implements a model with framework already defined and deployed, being customized for each institution. Its model is in line with the regulatory demands of the sector.

The management software offers greater practicality and agility in your data analyses and updates, and allows easily carrying out simulations and creating reports, economic-operational dashboards and overviews with indicators.

Who is it intended for?

Those organizations that need a tool to support pricing decisions and improve management by reviewing the structure and assessing economic performance, as well as for planning and support to decision-making, such as:

Port Operators and Private Terminals

- Costing and pricing of operations;
- Operational benchmarking.

Port authorities

- Costing and pricing of operations;
- Cost optimization projects;
- Economic-operational indicators.

Regulatory agencies

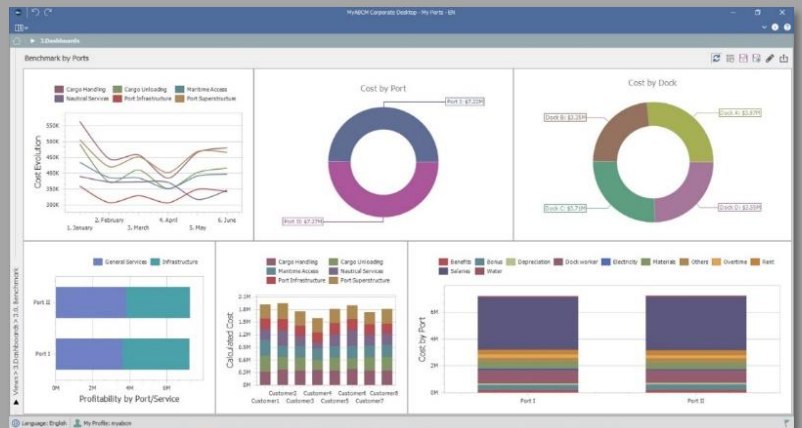
- Control of operations;
- Resource cost-effectiveness analysis;
- Definition of national policies;
- Port benchmarking;
- Definition of average and specific parameters.

Infrastructure ministries

- Definition of investment and incentive policy;
- Definition of parameters for concession.

Benefits

- Benchmarking analysis of trading ports, piers for loading and unloading, services and customers;
- Consolidation of costs per activities and processes;
- Cost of locations, tables and tariff items, berthing and cargo;
- Sector-specific activity/process dictionary that reflects the company's operational and administrative processes;
- Simulation of results according to the occupancy rate;
- Economic-operational indicators;
- Pricing;
- Performance management;
- Predicted vs. Performed;
- Agility and reliability of information.



Dimensions to be analyzed

My Ports' modeling is based on modern and flexible costing methods, and its implementation starts with the study of the databases made available by the company, in order to integrate them into the software. The specific characteristics of the model are:

- Validation of the cost object structure and relationship between structures;
- Classification of resources into clusters and classification into attributes;
- Definition/validation of drivers and databases for automated system loading;
- Scenario analysis, creation of reports and dashboards, simulation management;
- Model automation.

*“Thanks to the support and training of the **MyABCMS** team, in 3 months we were able to implement the cost model for our terminal, establish the drivers to allocate costs to activities, and then to each of the cost objects we had determined, always with excellent traceability of all information”*

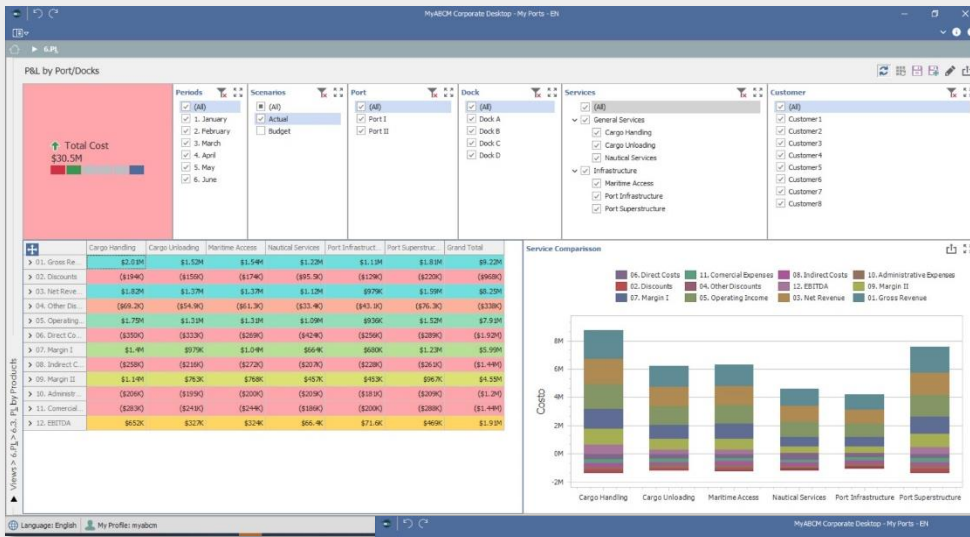
Ricardo Cabrera

Department of Costs – **Contecon Manzanillo SA de CV**

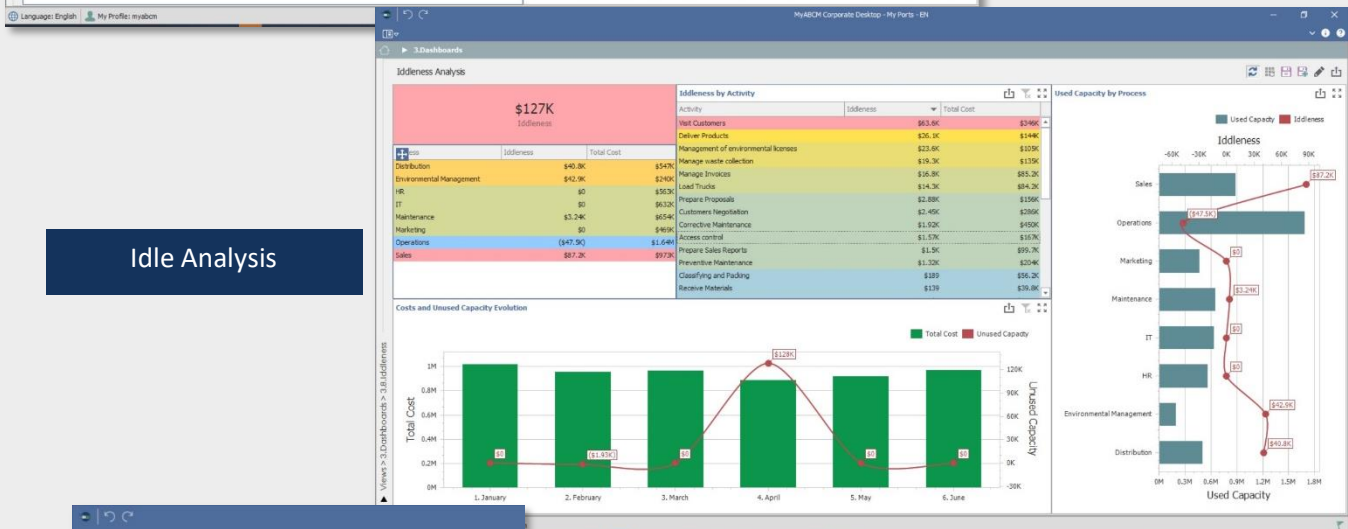
Mexico

Clients who can prove the efficiency of this solution:





DRE detailed by Services, Ports, Terminals, Berths, Customers



Idle Analysis

Costs by Processes and Activity

Activities

Name	Driver Name
Port operation	# hours of operation
Traffic management	# of inbound traffic
Infrastructure management	# of square feet per dock
Operational inspection	# of inspections
Security and surveillance	# of square feet per port
Access control	# of accesses
Visit Customers	# of visits
Customers Negotiation	# of negotiations
Prepare Proposals	# of proposals
Manage Invoices	# of invoices
Prepare Sales Reports	# of reports
Deliver Products	Delivered cubic volume
Store Products	Storage square feet
Load Trucks	Loaded cubic volume
Inventory Control	Inventory square feet
Classifying and Packing	Classifying hours
Receive Materials	# of purchasing invoices
Corrective Maintenance	# of maintenance requests
Preventive Maintenance	Preventive maintenance hours
Train Employees	# of training hours
Hire Employees	# of hired employees
Institutional Marketing	# of institutional advertisement hours
Market Research	# of investigation hours
Promotional Marketing	# of advertisement hours

About our Partner

In the market for over 15 years, **Parametrus** specializes in the development of customized solutions to assess a company's performance, developing cost and profitability management systems. It works on the integration of quality training and practical experience. Formed by consultants with solid academic background and proven expertise in the development and implementation of management information systems.



To find out more, contact us: www.myabcm.com/contact

Copyright - All rights reserved.

